

CAMP CRUSADER:

WHERE IMAGINATIONS RUN WILD

2018
CAMP CRUSADER
AT
ST. LOUIS KING OF FRANCE
HANDBOOK

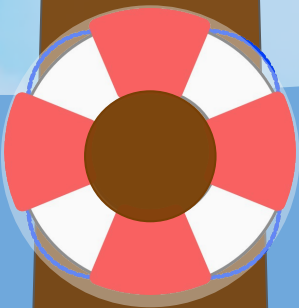
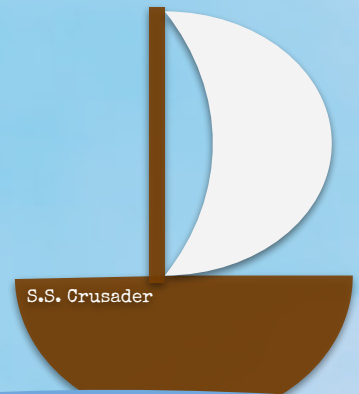
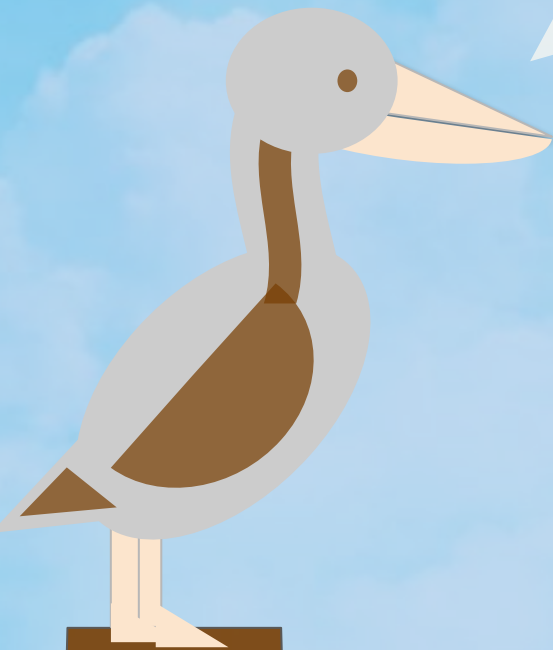


WELCOME TO CAMP CRUSADER

CAMP CRUSADER MISSION:

CAMP CRUSADER IS A SUMMER CAMP PROVIDED BY ST. LOUIS KING OF FRANCE SCHOOL. CAMP CRUSADER'S MISSION IS TO PROVIDE A SAFE AND FUN ATMOSPHERE FOR CHILDREN AGES PK4 - 7TH GRADE.

CAMP CRUSADER BELIEVES IN ENCOURAGING CHILDREN TO LEARN WHILE THEY PLAY IN A RELAXED FUN-FILLED ENVIRONMENT. CAMP CRUSADER BELIEVES IN LETTING CHILDREN'S IMAGINATIONS RUN WILD WHILE LEARNING NEW SKILLS AND ENJOYING THE MAGIC MONTHS OF SUMMER.



CAMP CRUSADER IS LOCATED AT:

ST. LOUIS KING OF FRANCE SCHOOL: 1600 LAKE AVENUE, METAIRIE, LA 70005

504.833.8224

WWW.SLKFSCHOOL.COM/CAMP-CRUSADER



CAMP HOURS

CAMP CRUSADER OFFICE HOURS: 7:30 AM-5:30 PM

BEFORE CARE: 7:45 AM-8:30 AM

FULL DAY SCHEDULE: 8:30 AM-3:00 PM

DISMISSAL: 3:15 PM

AFTER CARE: 3:30 PM-5:30 PM

CAMP TUITION AND FEES



CAMP FEES:

*ALL PAYMENTS ARE NON-REFUNDABLE

BEFORE APRIL 30TH:

REGISTRATION: \$50 PER CAMPER

WEEKLY TUITION: \$165 PER CAMPER

*\$65.00 DEPOSIT ON ALL WEEKLY
RESERVATIONS DUE BY APRIL 30TH.

DISCOUNTS: (AVAILABLE UNTIL APRIL 30TH)

FULL SUMMER: \$1,295

AFTER APRIL 30TH: (ONLY WEEKLY RESERVATIONS AVAILABLE)

REGISTRATION: \$75 PER CAMPER

*65.00 DEPOSIT ON ALL WEEKLY RESERVATIONS
DUE WITH REGISTRATION

EXTENDED DAY:

BEFORE CARE: NO CHARGE

AFTER CARE: \$8 PER DAY/PER
CAMPER

*WE ASK THAT YOU PREPAY FOR
AFTER CARE, OR PAY BY THE WEEK.

*ALL AFTER CARE PAYMENTS ARE
DUE ON FRIDAY OF EACH WEEK.

TUITION AND FEES POLICY:

ALL TUITION MUST BE PREPAID.

ALL WEEKLY TUITION PAYMENTS ARE DUE BY THE FRIDAY PRIOR TO WEEK ATTENDING. ALL PAYMENTS ARE NON-REFUNDABLE. *YOUR CHILD CANNOT ATTEND CAMP FOR THE FOLLOWING WEEK IF TUITION IS NOT PAID.*

IF AN NSF CHECK IS PROCESSED, YOU WILL NEED TO PICK UP YOUR CAMPER IMMEDIATELY FROM CAMP UNTIL PAYMENT IS MADE. IF THE SCHOOL INCURS BANK CHARGES RESULTING FROM, BUT NOT LIMITED TO, CLOSED OR OVERDRAWN ACCOUNTS, YOU WILL NEED TO PAY THOSE CHARGES IN ADDITION TO REGULAR TUITION PAYMENTS OWED.

*FURTHER, ALL FUTURE PAYMENTS TO CAMP CRUSADER WILL ONLY BE ACCEPTED IF PAID IN CASH.



CAMP RULES

GENERAL RULES:

CAMP CRUSADER ENCOURAGES CAMPERS TO CONTRIBUTE TO THE CAMP ENVIRONMENT IN A RESPONSIBLE AND COOPERATIVE WAY.

CAMPER BEHAVIOR THAT IS DISRUPTIVE TO OTHERS, IS UNSAFE, OR REQUIRES THE TEACHER OR COUNSELOR TO ATTEND TO THE BEHAVIOR IS DISCOURAGED.

IF A CAMPER'S NEGATIVE BEHAVIOR CONTINUES AFTER A CONSULTATION WITH THE CAMP DIRECTORS AND THE CAMPER'S PARENTS, THE CAMPER MAY BE ASKED TO LEAVE CAMP FOR THE DAY, AND/OR DURATION OF SUMMER.

CERTAIN REPETITIVE OR SEVERE BEHAVIORAL INFRACTIONS MAY DICTATE THAT A STUDENT BE DISMISSED FROM CAMP CRUSADER PERMANENTLY AT THE DISCRETION OF THE CAMP AND SCHOOL ADMINISTRATION.

*NO REFUNDS WILL BE ISSUED.

ANY BEHAVIOR THAT INTERFERES WITH A CAMPER'S ABILITY TO LEARN, A COUNSELOR'S ABILITY TO CARE FOR A CLASS, OR A TEACHER'S ABILITY TO TEACH IS NOT ALLOWED.

ILLNESS POLICY:

CAMPERS MUST BE HEALTHY ENOUGH TO PARTICIPATE IN CAMP CRUSADER'S DAILY CAMP ACTIVITIES.

FOR THE SAFETY AND COMFORT OF YOUR CAMPER, PLEASE KEEP THEM HOME UNTIL THEY FEEL BETTER AND ARE NO LONGER CONTAGIOUS. IF YOU ARE KEEPING YOUR CAMPER HOME DUE TO ILLNESS, PLEASE CONTACT THE CAMP OFFICE BY 9:00AM AND LET THE STAFF KNOW OF YOUR CAMPER'S ABSENCE.

WHEN YOUR CAMPER HAS A FEVER (OF 101 OR HIGHER) OR VOMITING/DIARRHEA, PLEASE MAKE SURE THEY REMAIN AT HOME 24 HOURS AFTER THEIR TEMPERATURE AND SYMPTOMS RETURN TO NORMAL AND THEY ARE NO LONGER TAKING MEDICATION.

IN THE EVENT THAT YOUR CAMPER BECOMES ILL DURING THE DAY, YOU WILL BE CONTACTED AS SOON AS POSSIBLE.

IF THE PARENT OR GUARDIAN IS UNABLE TO BE REACHED, THE CHILD'S EMERGENCY CONTACT WILL BE NOTIFIED. IT IS THE RESPONSIBILITY OF THE PARENTS TO ARRANGE FOR THE CHILD TO BE PICKED UP FROM CAMP AS SOON AS POSSIBLE.

IT IS THE RESPONSIBILITY OF THE PARENTS TO MAKE SURE THAT ALL PHONE NUMBERS FOR EMERGENCY CONTACTS ARE UP TO DATE.

ACCIDENTS/EMERGENCIES: ALL PRECAUTIONS WILL BE TAKEN TO PREVENT SERIOUS HEALTH RISKS TO ALL CAMPERS. IN THE EVENT THAT A MINOR INJURY OCCURS, FIRST AID WILL BE ADMINISTERED AT THE CAMP.

PARENTS WILL ASSUME ALL FINANCIAL RESPONSIBILITY FOR ANY SITUATION REQUIRING EMERGENCY ROOM TREATMENT.



HEALTH & SAFETY

MEDICATION:

MEDICATION THAT NEEDS TO BE ADMINISTERED TO A CHILD SHOULD BE BROUGHT DIRECTLY TO A CAMP DIRECTOR IN THE CAMP CRUSADER OFFICE VIA THE PARENT/GUARDIAN IN THE ORIGINAL MEDICINE CONTAINER.

*MEDICINE MUST NOT BE BROUGHT TO THE OFFICE BY THE CHILD.

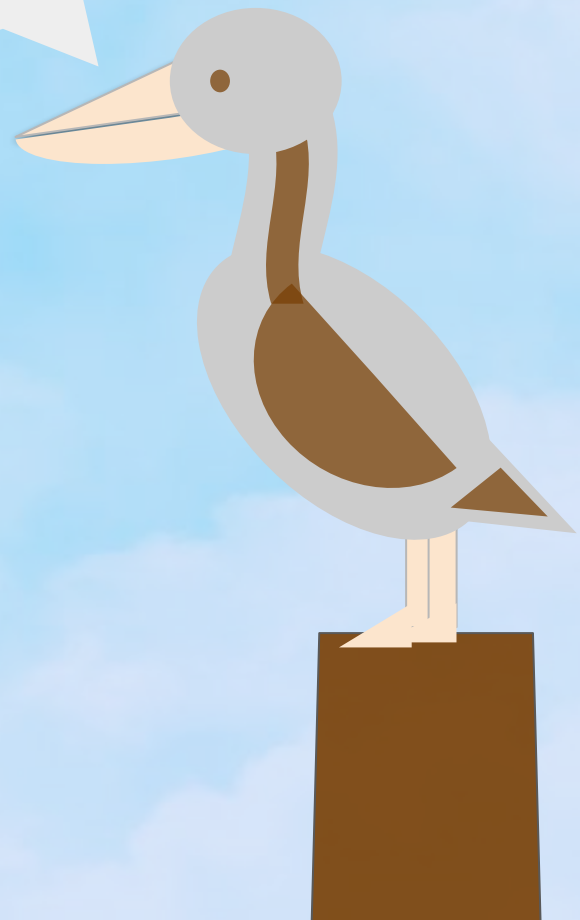
ALL MEDICATION MUST BE ACCOMPANIED BY THE COMPLETED "CAMP CRUSADER MEDICINE FORM."

ALL CAMPERS MUST BE
COMPLETELY POTTY TRAINED
TO REMAIN AT CAMP FOR
THE SUMMER.

HEALTH AND SAFETY:

ALL CAMPERS MUST BE COMPLETELY POTTY TRAINED TO REMAIN AT CAMP FOR THE SUMMER. WE UNDERSTAND THAT THERE ARE TIMES WHEN A CAMPER WILL HAVE AN ACCIDENT; HOWEVER, IF THIS OCCURS ON A REGULAR BASIS, THE CHILD WILL NOT BE ALLOWED TO CONTINUE COMING TO CAMP.

THIS IS A HEALTH ISSUE AS WE SWIM EVERY DAY. IT IS ALSO A SAFETY ISSUE AS A COUNSELOR WOULD HAVE TO BE AWAY FROM THEIR GROUP TO CHANGE THE CAMPER, LEAVING THE OTHER COUNSELOR IN CHARGE WITH A LARGE GROUP OF CHILDREN. SAFETY IS OUR TOP PRIORITY AT CAMP AND ANYTHING THAT WILL JEOPARDIZE THIS CANNOT BE ALLOWED.



CAMPER FORMS



EACH CAMPER MUST HAVE
A COMPLETED:

- *CAMP REGISTRATION FORM
- *PARENT HANDBOOK ACKNOWLEDGEMENT
- *SUMMER CAMP PARENTAL/GUARDIAN LIABILITY WAIVER
- *SUMMER CAMP MEDICAL MATTERS
- *IF NEEDED, A CAMP CRUSADER MEDICINE FORM
- *IF NEEDED, SAFETY AND HEALTH ISSUES
- *SWIM TEST PERMISSION FORM
- *PHOTO RELEASE FORM
- *IF NEEDED, AFTER CARE MASTER CARD

THESE FORMS MUST BE GIVEN
TO THE CAMP DIRECTORS
PRIOR TO THE START OF CAMP
OR YOUR CHILD
WILL NOT BE ABLE TO ATTEND CAMP!!

PLEASE BE SURE THAT THE INFORMATION
ON THE FORMS
IS ACCURATE AND COMPLETE.

PLEASE DO NOT LEAVE ANY OF THE
FIELDS BLANK
ON ANY OF THE FORMS.



TECHNOLOGY:

CAMPERS, STAFF, AND ADMINISTRATORS OF THE ARCHDIOCESE OF NEW ORLEANS SCHOOL DISTRICT HAVE THE OPPORTUNITY TO ACCESS THE INTERNET TO FACILITATE THE NEED TO PREPARE CAMPERS AND STAFF TO BE COMPUTER LITERATE IN AN INCREASINGLY TECHNOLOGICAL WORLD, TO FOSTER EDUCATIONAL AND PERSONAL GROWTH, INFORMATION GATHERING, AND COMMUNICATION SKILLS.

IT IS UNDERSTOOD THAT THE USE OF THE INTERNET IS A PRIVILEGE. THE PRIMARY USE OF THE NETWORK SHALL BE RESERVED TO THOSE INDIVIDUALS WHO UTILIZE THE MATERIALS THAT ARE OF "EDUCATIONAL VALUE" TO THE STUDENTS OF THE ARCHDIOCESE OF NEW ORLEANS SCHOOL DISTRICT.

THE USE OF THE SYSTEM FOR DEFAMATORY, INACCURATE, ABUSIVE, OBSCENE, PROFANE, SEXUALLY ORIENTED, THREATENING, RACIALLY OFFENSIVE, AND ILLEGAL MATERIAL OR OTHER PROHIBITED ACTIVITIES SHALL NOT BE PERMITTED AND THE ARCHDIOCESE OF NEW ORLEANS SCHOOL DISTRICT WILL USE ANY AND ALL EFFORTS AVAILABLE TO IT, WITHIN THE CONFINES OF THE LAW, TO PREVENT SUCH MATERIAL FROM ENTERING THE SCHOOL NETWORK.

PROFESSIONAL EMPLOYEES OF THE SCHOOL WILL MONITOR THE USE OF THE INTERNET. CAMPERS WHO VIOLATE THE INTERNET GUIDELINES OF THE SCHOOL MAY BE DENIED FUTURE INTERNET PRIVILEGES.



CAMPERS WHO VIOLATE
THE
INTERNET GUIDELINES
OF THE SCHOOL
MAY BE
DENIED
FUTURE INTERNET
PRIVILEGES.

DAILY SCHEDULE:

MORNING ARRIVAL:

PARENTS AND GUARDIANS MUST KEEP IN MIND THAT CAMP CRUSADER'S MAIN PRIORITY DURING MORNING DROP-OFF AND AFTERNOON PICKUP IS SAFETY FOR OUR CAMPERS. THEREFORE, WE ASK THAT PARENTS PAY CLOSE ATTENTION TO THE FOLLOWING RULES AND REGULATIONS FOR BOTH MORNING DROP-OFF AND AFTERNOON PICKUP.

- * CAMPERS ARE TO REPORT TO MARION HALL TO MEET THEIR COUNSELORS EACH MORNING BY 8:30 AM.
- * PARENTS MUST DROP THEIR CAMPERS AT THEIR CLASSROOM AND SIGN IN WITH THE COUNSELOR. WE ASK THAT ALL CAMPERS ARRIVE BY 8:20 AM. SO THEY WILL BE READY TO BEGIN ACTIVITIES AT THE ASSIGNED TIME.

CAMP ACTIVITIES:

*A TYPICAL DAILY SCHEDULE IS AS FOLLOWS:

7:30 AM-8:30 AM EXTENDED DAY (IF APPLICABLE)

8:30 AM-10:00 AM CAMP ACTIVITIES

10:00 AM-10:30 AM SNACK

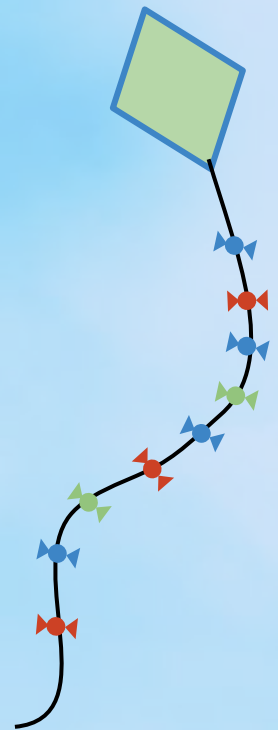
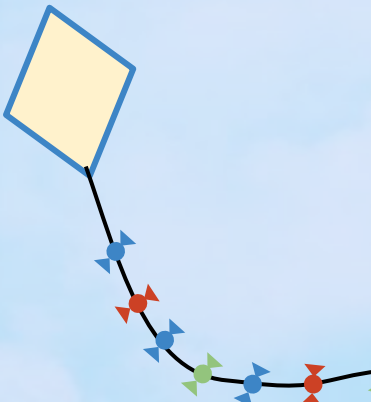
10:30 AM-11:45 AM CAMP ACTIVITIES

11:45 AM-1:00PM LUNCH / RECESS

1:00 PM-3:00PM CAMP ACTIVITIES

3:15 PM DISMISSAL

3:30 PM-5:30 PM EXTENDED DAY (IF APPLICABLE)



DISMISSAL PROCEDURES:

- * CAMPERS MAY BE PICKED UP AT 3:15 PM IN THE CAMPER'S CLASSROOM.
- * PLEASE OBSERVE THE 5 MPH SPEED LIMIT IN THE BIG PARKING LOT. PLEASE PARK ONLY IN DESIGNATED PARKING SPACES.
- * ANY CAMPER THAT IS NOT PICKED UP BY 3:30 PM WILL BE CHECKED IN AND CHARGED FOR AFTER CARE, WHICH BEGINS AT 3:30 PM

BEFORE CARE/AFTER CARE:

THERE IS NO CHARGE FOR BEFORE CARE.

THE CHARGE FOR AFTER CARE IS \$8 PER DAY PER CAMPER. ALL CAMPERS MUST BE CHECKED OUT BY A PARENT/GUARDIAN/APPROVED INDIVIDUAL.

ALL CAMPERS MUST BE SIGNED OUT IN THE CAMPER'S AFTER CARE BINDER.

PARENTS AND GUARDIANS WILL BE CHARGED
\$1.00 PER MINUTE
FOR EVERY MINUTE THEY ARE LATE
IN PICKING UP THEIR CHILD
AFTER 5:30 PM.

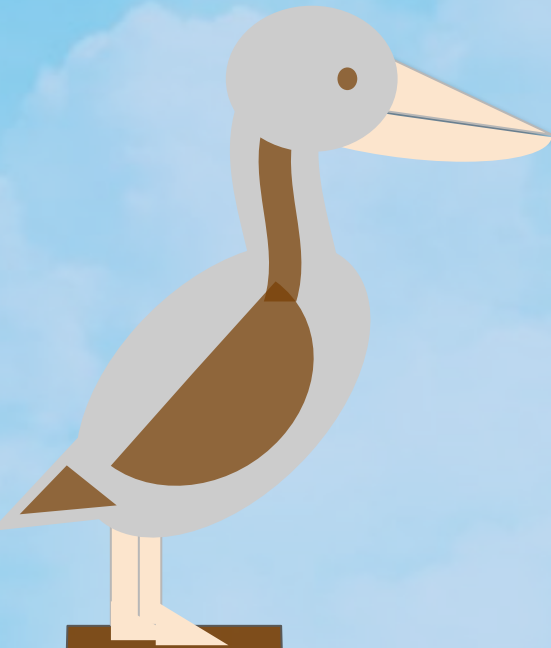
ALL EXTENDED DAY PAYMENTS MUST BE PAID AT THE END OF EACH CAMP WEEK.

SWIMMING AND WATER PLAY

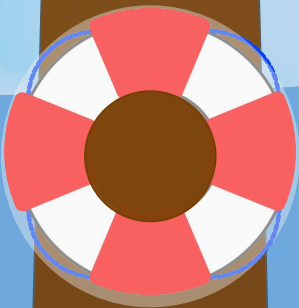
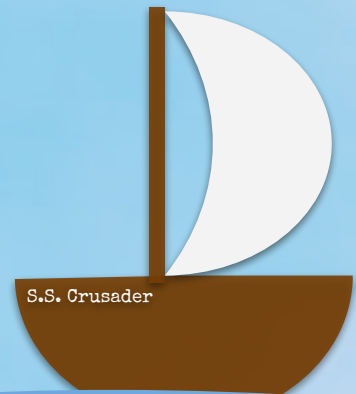


SWIMMING:

CAMP CRUSADER HAS AN ABOVE GROUND POOL ON CAMPUS FOR OUR CAMPERS. IT IS 21x43 FEET WIDE AND 4 ½ FEET DEEP. IT ALSO HAS A DECK SO THAT OUR CERTIFIED RED CROSS LIFEGUARDS WILL BE ABLE TO CLOSELY MONITOR THE SWIMMERS. ALL CAMPERS ENTERING K – 7TH GRADE WILL BE REQUIRED TO TAKE A SWIM TEST TO ENSURE THAT EACH CAMPER IS ABLE TO SWIM. IF A STUDENT FAILS THE TEST, THEY WILL BE REQUIRED TO WEAR A CERTIFIED FLOTATION DEVICE. PLEASE KEEP IN MIND THIS TEST IS FOR THE SAFETY OF OUR CAMPERS.



★ WE ASK THAT
ALL KINDERGARTEN CAMPERS
BRING FLOATIES
OR A SWIM VEST
UNTIL WE ARE COMFORTABLE
THAT HE/SHE CAN SWIM ALONE.



ALL COUNSELORS WILL BE REQUIRED TO PARTICIPATE IN SWIMMING WITH THEIR CAMPERS. IT IS HIGHLY RECOMMENDED THAT ALL CAMPERS BRING "SWIMMER'S EAR" AND IT CAN BE ADMINISTERED IN THE CAMPER'S EAR AFTER EACH SWIM. THIS WILL PREVENT THE MOST COMMON INFECTION DURING THE SUMMER SWIMMING MONTHS: SWIMMER'S EAR.

CAMPER SUPPLIES:

CAMP CLOTHING:

ALL CAMPERS WILL RECEIVE A CAMP CRUSADER T-SHIRT. ADDITIONAL T-SHIRTS CAN BE PURCHASED FOR \$10 IN THE CAMP CRUSADER OFFICE. WE STRONGLY RECOMMEND THE CAMP CRUSADER T-SHIRT AND GYM SHORTS FOR DRESS.

STUDENTS SHOULD DRESS CASUALLY AND COMFORTABLY WITH ENCLOSED SHOES (TENNIS SHOES ARE BEST) THAT WILL REMAIN SECURELY ON THEIR FEET. BE SURE HIS/HER CLOTHES ARE APPROPRIATE FOR OUTDOOR ACTIVITIES, SPORTS, GAMES, PAINTING, ETC.

PK4 AND KINDERGARTEN CAMPERS SHOULD WEAR THEIR BATHING SUITS TO CAMP EACH DAY, SINCE THEY WILL BE SWIMMING/HAVING WATER ACTIVITIES IN THE MORNING. BE SURE TO APPLY AND SEND SUNSCREEN AND A TOWEL WITH YOUR CAMPER DAILY. IF YOU WISH TO SEND "SWIMMER'S EAR", COUNSELORS CAN ADMINISTER THIS AFTER SWIMMING.

OLDER STUDENTS WILL BE ALLOWED TO CHANGE INTO THEIR SWIMSUITS BEFORE SWIMMING. CAMPERS IN 1ST THROUGH 7TH GRADE MAY WEAR THEIR SWIMSUITS TO CAMP OR BRING THEM TO CAMP IN A BAG WITH THEIR TOWEL. CAMPERS SHOULD HAVE A ZIPLOC BAG TO PLACE WET SWIMSUITS IN ONCE THEY ARE FINISHED SWIMMING. EVERY STUDENT MUST HAVE A PAIR OF UNDERWEAR TO CHANGE INTO AFTER SWIMMING.

ALL ITEMS MUST BE CLEARLY MARKED
WITH THE CAMPER'S NAME.

IT IS
RECOMMENDED
FOR ALL CAMPERS IN THE
PK4 AND KINDERGARTEN CLASSES
TO HAVE AN EXTRA
CHANGE OF CLOTHES
INCLUDING SOCKS AND UNDERWEAR.
PLEASE PLACE THIS
IN A ZIPLOC BAG
WITH YOUR CHILD'S NAME
ON EACH PIECE OF CLOTHING AND THE BAG.

LOST AND FOUND:

WE DO HAVE A LOST AND FOUND AREA AT CAMP. IT IS HIGHLY RECOMMENDED THAT YOU LABEL ALL ITEMS (CLOTHING, TOWELS, LUNCH BOXES, WATER BOTTLES, ETC.) WITH YOUR CAMPER'S NAME.

CAMP CRUSADER WILL NOT BE HELD RESPONSIBLE FOR LOST OR STOLEN ITEMS.

PLEASE MAKE A QUICK CHECK OF YOUR CHILD'S BACKPACK AT THE END OF THE CAMP DAY BEFORE LEAVING.

SNACKS AND LUNCH:

CAMP CRUSADER OFFERS LUNCH AND SNACK TO CAMPERS DAILY. LUNCHES ARE \$20/WEEK AND SNACKS ARE \$10/WEEK. LUNCH INCLUDES A DRINK, ENTREE, AND SIDE. SNACKS INCLUDE A DRINK AND A SNACK FROM THE SNACK CART.

ALL LUNCHES AND SNACKS ARE PRE-PAID. ALL LUNCH/SNACK PAYMENTS MUST BE MADE BY FRIDAY OF THE WEEK PRIOR TO YOUR CAMPER ATTENDING CAMP. THE PAYMENTS ARE ONLY USED FOR THE WEEK FOR WHICH THEY WERE PAID. THERE ARE NO REFUNDS OR ROLLOVERS ON LUNCH/SNACK FUNDS REGARDLESS OF ABSENCE, HOLIDAY, OR UNEXPECTED CAMP CLOSURE.

CRUSADER CAFÉ:

LUNCH:

HAMBURGER WITH FRIES

CHICKEN NUGGETS WITH FRIES

HOT DOG (SERVED PLAIN, WITH CHEESE, OR WITH CHILI/CHEESE) WITH FRIES

NACHOS (SERVED WITH CHEESE, CHILI, OR CHEESE/CHILI) WITH FRIES

(**FRIDAY ONLY**) PIZZA

SNACKS:

CHIPS, CANDY, FROZEN TREATS

DRINKS:

GATORADE (K-7), WATER (PK-7), CAPRI SUN (PK)

PIZZA IS ALWAYS FREE ON FRIDAYS.

**WE DO NOT SERVE ANY LUNCHES FROM THE CRUSADER CAFÉ ON FRIDAYS.

IF YOUR CAMPER DOES NOT ORDER PIZZA, HE/SHE WILL HAVE TO BRING HIS/HER LUNCH THAT DAY.

PLEASE TURN IN ALL MONEY IN AN ENVELOPE OR ZIPLOCK BAG WITH THE CAMPER'S NAME ON IT. CAMP DIRECTORS ARE RESPONSIBLE FOR ALL MONEY.

** PLEASE DO NOT SEND YOUR CAMPER WITH MONEY, OR LEAVE MONEY WITH YOUR CAMPER'S COUNSELOR.

CAMPERS ARE NOT ALLOWED TO HAVE SOFT DRINKS AT CAMP

MISC.:

EMERGENCIES/CAMP CLOSURE:

IN THE CASE OF HURRICANES, DISASTERS, OR OTHER EMERGENCIES, CAMP CRUSADER AT ST. LOUIS KING OF FRANCE WILL CLOSE WHEN THE JEFFERSON PARISH SCHOOL SYSTEM CLOSSES. IT IS IMPERATIVE THAT WE HAVE CURRENT TELEPHONE NUMBERS AND E-MAIL ADDRESSES ON FILE IN THE CAMP CRUSADER OFFICE. THE OFFICIAL LISTENING POSTS FOR THE OFFICE OF CATHOLIC SCHOOLS ARE WWLAM 870, WWL-TV CHANNEL 4, WDSU-TV CHANNEL 6, FOX-TV CHANNEL 8, AND ABC-TV CHANNEL 26.

IN THE EVENT OF CAMP CLOSURE DUE TO AN ACT OF GOD, NO REFUNDS WILL BE ISSUED.

RIGHT TO AMEND HANDBOOK:

THE SCHOOL AND CAMP ADMINISTRATION RETAINS THE RIGHT TO AMEND THIS HANDBOOK FOR JUST CAUSE. CAMPERS AND PARENTS WILL BE GIVEN PROMPT NOTIFICATION IF CHANGES ARE MADE.

XXXXXXXXXXXX
THANK YOU FOR ENTRUSTING US WITH
THE CARE AND EDUCATION
OF YOUR CHILD THIS SUMMER.

CAMP CRUSADER
IS COMMITTED TO PROVIDING A SAFE AND FUN
ATMOSPHERE FOR ALL CAMPERS.

PLEASE DO NOT HESITATE TO CONTACT US WITH ANY QUESTIONS, ISSUES, OR
CONCERNS.

A CAMP CRUSADER CAMP DIRECTOR WILL BE AVAILABLE IN THE CAMP
CRUSADER OFFICE TO HELP YOU WITH ANYTHING.